

CERTIFICATE OF LOCATION OF GOVERNMENT CORNER

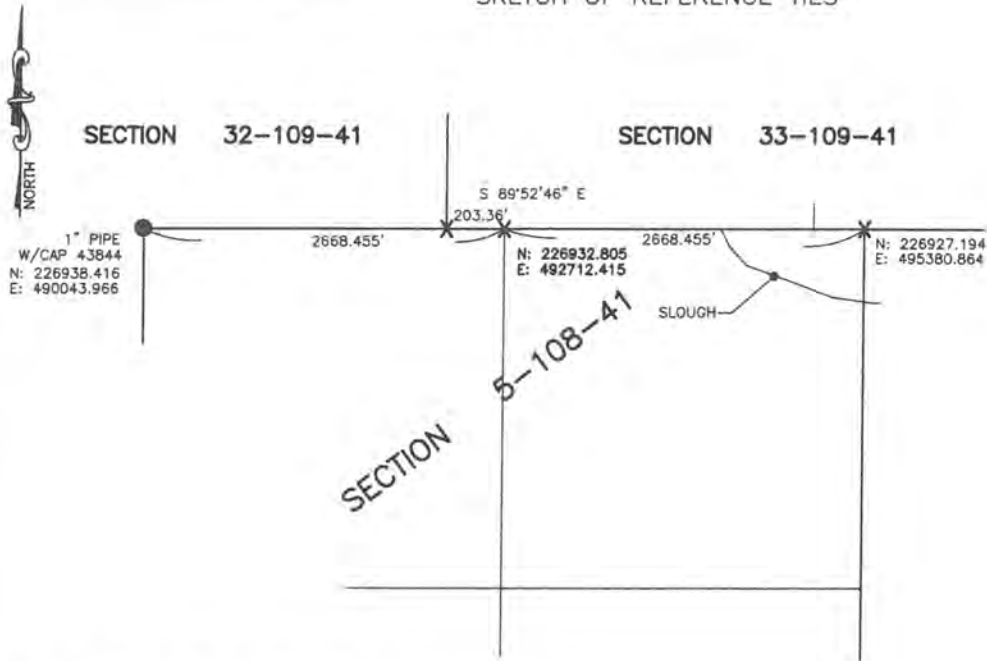
North Quarter Corner of Section 5, Township 108, Range 41, 5TH P.M.

STATE OF MINNESOTA, County of Murray

At the corner location shown on the sketch:

- On _____ found a _____
DATE
- left monument as found, lowered monument, removed monument (explain)
- On Jan 21, 2019 placed a computed a point midway and on line.
DATE

SKETCH OF REFERENCE TIES



Minnesota State Plane Coordinate
System Murray County Datum NAD83 (1996)

Statement of evidence relative to this corner location is on back of page.

I hereby certify that this document and the data contained herein was prepared by me or under my direct supervision.

Daniel L. Buettel 1/22/2019
 Daniel L. Buettel DATE
 License No. 43844

STATE OF MINNESOTA, }
 COUNTY OF MURRAY, } ss.

I hereby certify that the within Instrument was filed in this office for record on the 5TH day of FEBRUARY, D. 20 19 at 9:00 o'clock A. M., and was duly recorded as Document No. _____

Lucy C. Larson
 County Recorder

Statement of Evidence

N1/4 5-108-41

In 1861, L.M. Fletcher did the original survey of the township.

January 21, 2019, Bueltel-Moseng Land surveying computed a point midway and on line between NW and NE corners. Nothing set, corner is in tillable ground.